

**AUGUST 23, 2012**  
**FOR IMMEDIATE RELEASE**

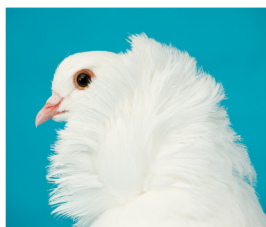
**CONTACT:** Emily Smith, Executive Director  
804.643.1708 or esmith@1708gallery.org

# CREST

SEPTEMBER 7 - OCTOBER 6, 2012

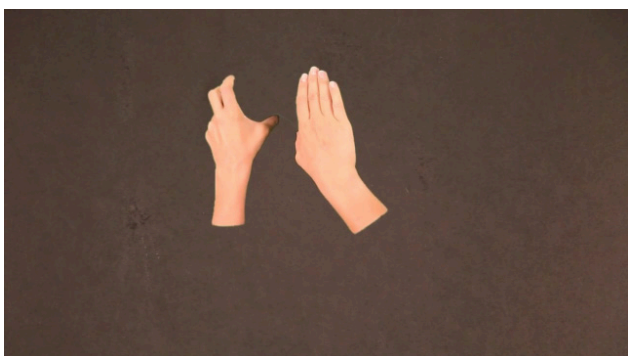


1708 Gallery is pleased to present its upcoming exhibition, **Crest**, on view September 7 through October 6, 2012. Curated by Emily Smith, Executive Director of 1708, **Crest** features work by Amy Chan, Leigh Cole, Jessica Kain, Melanie McLain, Alina Tenser, Hannah Walsh, and Naoko Wowsugi. Working across multiple mediums, these seven artists are connected by interests in surface and touch, nature and the body, and questions of the constructed versus the innate. Please join us on Friday, September 7, from 5 to 9 p.m. for the First Friday reception for **Crest**.



The artists in **Crest** seem specifically interested in touch as found in varying types of impression. We consider mimicry and impersonation to be “doing” an impression. Experiences that impact the context in which they occur “leave” or “make” an impression. When one is misled or confused, they were “under the impression.” All of these different forms of impression intertwine in the work of the seven artists in **Crest**.

Some works cop forms and symbols from other places, representing them in unfamiliar configurations (Chan and McLain); others explore the literal presence, absence and traces of objects (Wowsugi and Kain); pageantry, presentation and display mark the work of Cole as well as Walsh, who shares with Tenser a preoccupation with the interplay between concealment and revelation.



Fortunately, it's also much more complicated than that, as these artists' interests merge and diverge across different forms. Idiosyncratic yet strangely familiar, the works in **Crest** pose questions relating to environment, communication, memory, and embodiment. These artists sweep you off your feet and take the rug out from under you, all to remind you where you are.



**IMAGE CREDITS:** page 1: Amy Chan, *Hearts in Space 3*, 2012; Hannah Walsh, *Saint Diptych*, 2012; Alina Tenser, *Relief I*, 2011; page 2: Jessica Kain, *This Way, That Way*, 2012; Naoko Wowsugi, Untitled photograph from the *None of Your Business* series, 2012

All of the artists in **Crest** are recent MFA graduates with ties to Virginia Commonwealth University. Amongst them they have accumulated many prestigious awards, including the Pollock Krasner Foundation Grant, multiple VMFA fellowships, and residencies at Skowhegan and 7 Below Arts Initiative.

For more information about the artists in **Crest**, please visit the following websites:

- <http://amychan.org>
- <http://www.leighanncole.com>
- <http://arts.vcu.edu/sculpture/portfolios/jessica-kain>
- <http://melaniemclain.com>
- <http://alinatenser.com>
- <http://www.hannahwalsh.net>
- <http://wowsugi.com>

**Crest** is supported in part by Pam Royall, Mary Fowlkes, and Carreras Jewelers.

1708 Gallery's current exhibition season is generously supported in part by Jay Barrows and Cindy Neuschwander, Page and Sandy Bond, Richard Douglas and Suzanna Fields, Josh and Sarah Eckhardt, John Freeman, Kathryn Henry-Choisser, Susan and John Jamieson, Jillian Krupski, Celia Rafalko and Rick Sample, Bill and Pam Royall, the Virginia Commission for the Arts and the National Endowment for the Arts.

**1708 Gallery** is a non-profit arts organization committed to presenting exceptional new art. 1708 Gallery is committed to providing opportunities for artistic innovation for emerging and established artists and to expanding the understanding and appreciation of new art for the public.

###

